

Accessibility Project

Mary Foster & Holly Beaman
Strategy and Policy Projects Service

Project Aim

How are we improving access to services for Surrey?

... Bringing people and services closer together.

Objectives

- Develop an Accessibility Strategy for Surrey which will feed into the next Local Transport Plan.
- Review of the supported Bus Network.
- Review of the Pegasus initiative.
- Review of Community Transport.

Drivers

- Only “fair” rating of the Accessibility Strategy within the last Local Transport Plan.
- Drive to develop a more accessible and efficient bus network.
- Pegasus initiative finishes in Dec 2010; a decision needs to be made about future of this service to inform parents who will need to apply for school place in 2009.

Our Focus

Target Groups

- Children & Young People
- People with disabilities
- People on low income
- Older People
- Families
- Unpaid Carers
- Job Seekers
- Geographically isolated
- BME groups

Services

- Health Care
- Education and Training
- Culture and Leisure
- Families and Friends
- Essential Retail (including financial services)
- Work

Accessibility Strategy

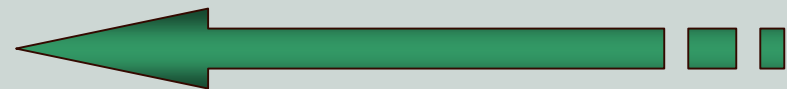


People to services

- Public Transport
- Private Transport
- Community Transport
- Health Transport
- School Transport

Services to people

- IT and technology
- Mobile Services
- Co-location
- Personalisation

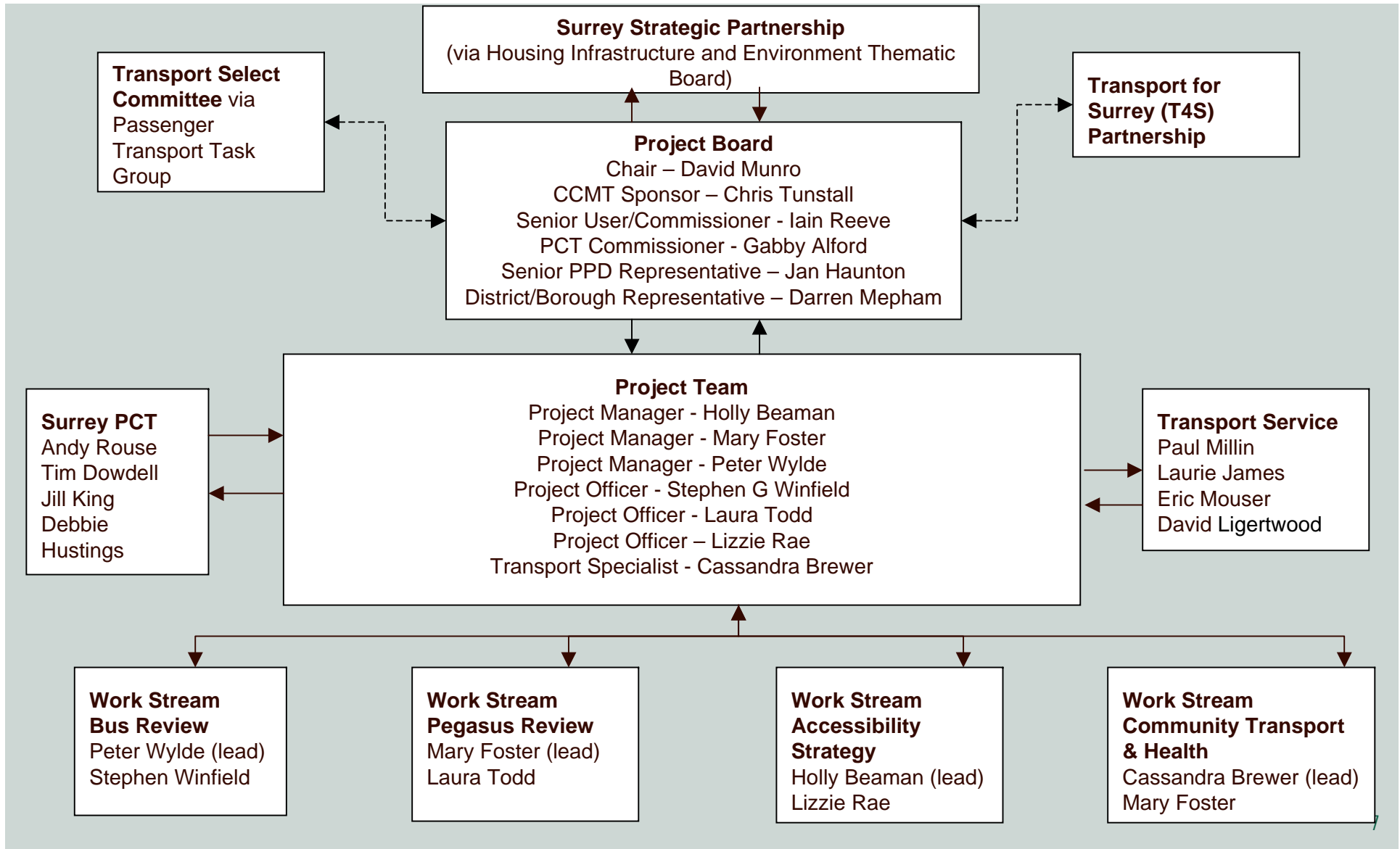


Project Governance

www.surreycc.gov.uk



Making Surrey a better place



Summary Activity & Milestone Plan

www.surreycc.gov.uk



Making Surrey a better place

Project	Timescale
Accessibility Strategy	March 09
Bus Review	February 09
Pegasus Review	December 08
Community Transport Review	March 09

Q: How can we work together to improve accessibility?

Barriers

- Lack of information in appropriate formats
- Access to the internet
- Cost of transport
- Lack of frequent transport
- Safety/ fear of crime
- Life changes/ transition issues
- Location of our facilities.



Opportunities



Accessibility Project Team

- **Holly Beaman** **02085 417180**
- **Mary Foster** **02085 418594**
- **Cassandra Brewer** **02085 419546**
- **Peter Wylde** **02085 419925**
- **Stephen G Winfield** **02085 417911**
- **Laura Todd** **02085 417035**
- **Lizzie Rae** **02085 417087**